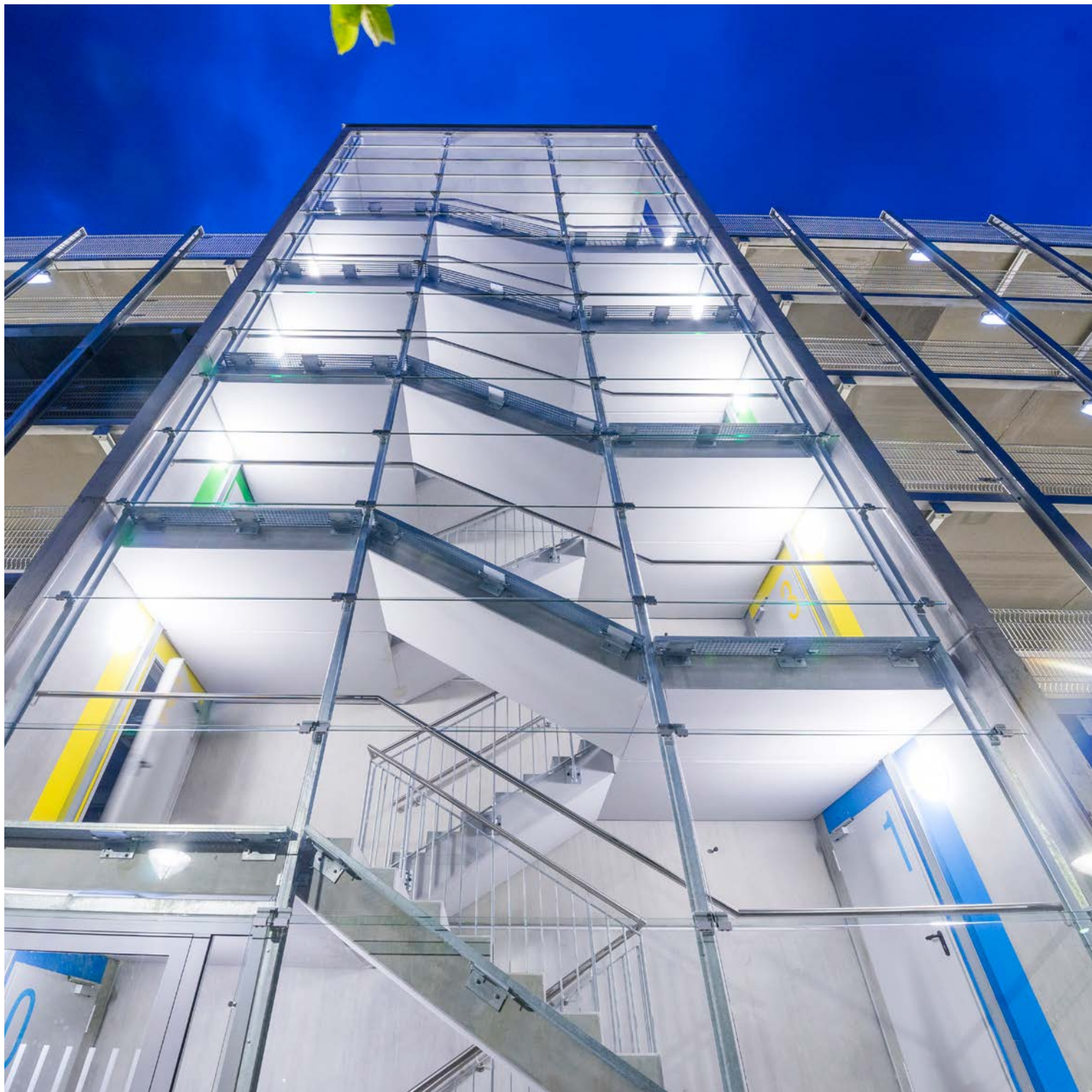
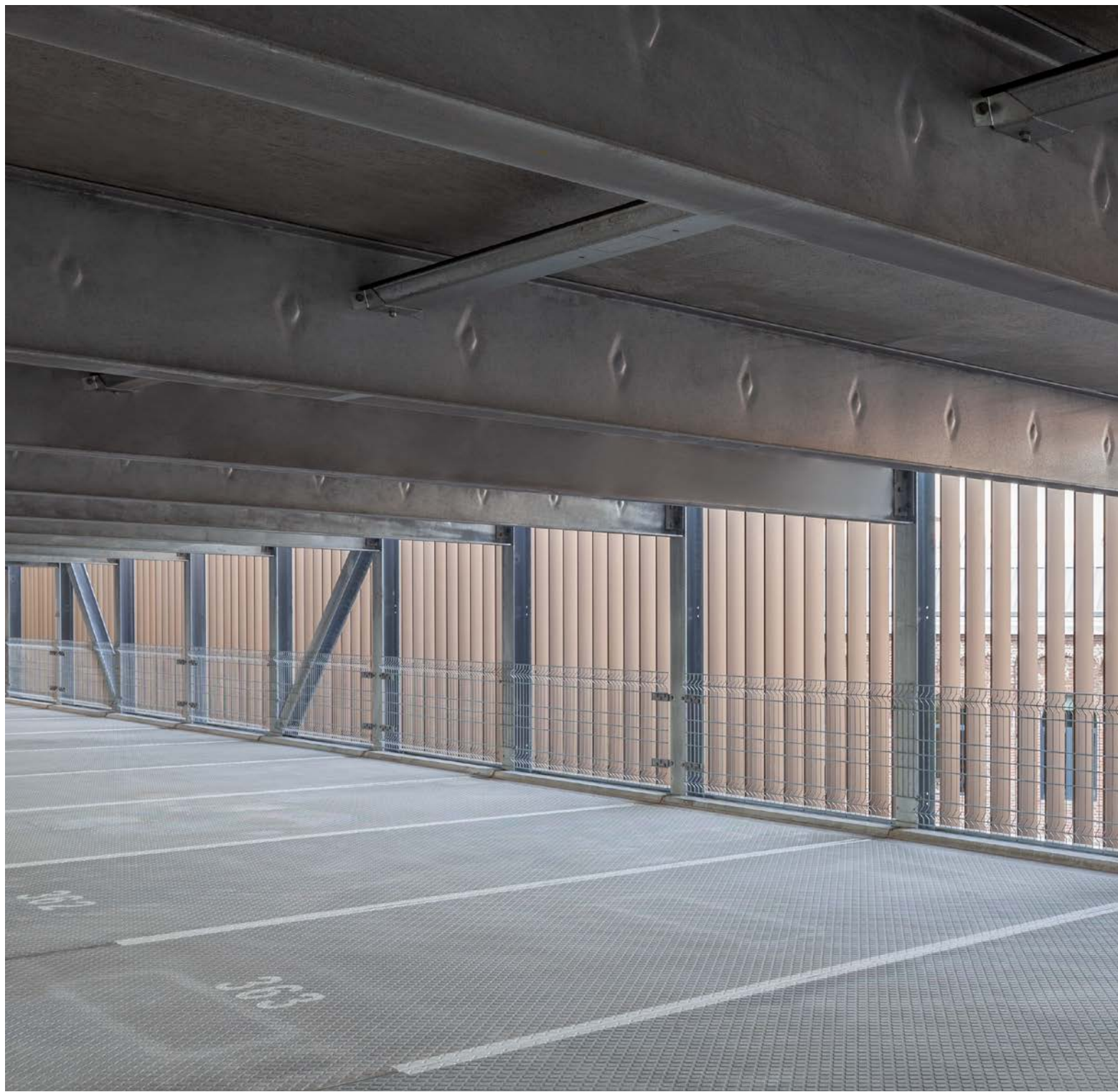


Car park facets



Car park facets

Intro	04
Corten steel/clinker brickwork facade	06
Mesh facade	10
Isopaneel facade	14
Lamella facade	20
Lamella facade with pv system	34
Pilaster strip facade	36
Without facade	44
Expanded metal facade	56
Max Bögl Group	58





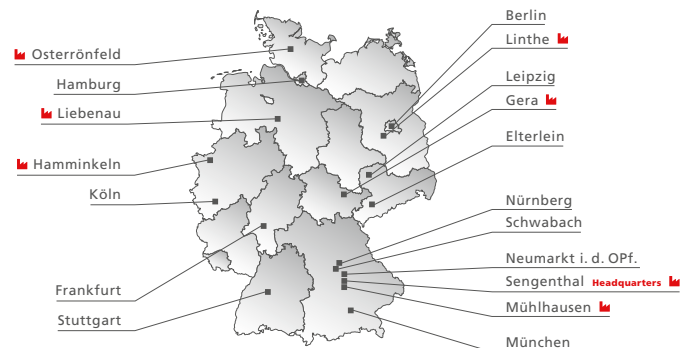
Excellent

Car park facets

Max Bögl car parks not only rely on an economical and efficient prefabricated construction method of the highest quality. The use of state-of-the-art facade technologies also results in a multitude of individual design options. Thus, facades and stairwells can be realised in a wide variety of colours, shapes and materials.

The car park gives you a highly functional building with a long service life and low maintenance requirements that also meets aesthetic requirements.

On the following pages you can be inspired by our references. Our car park experts will be happy to advise you directly on site. With 19 locations and seven of our own precast plants, our contacts are always close to you.



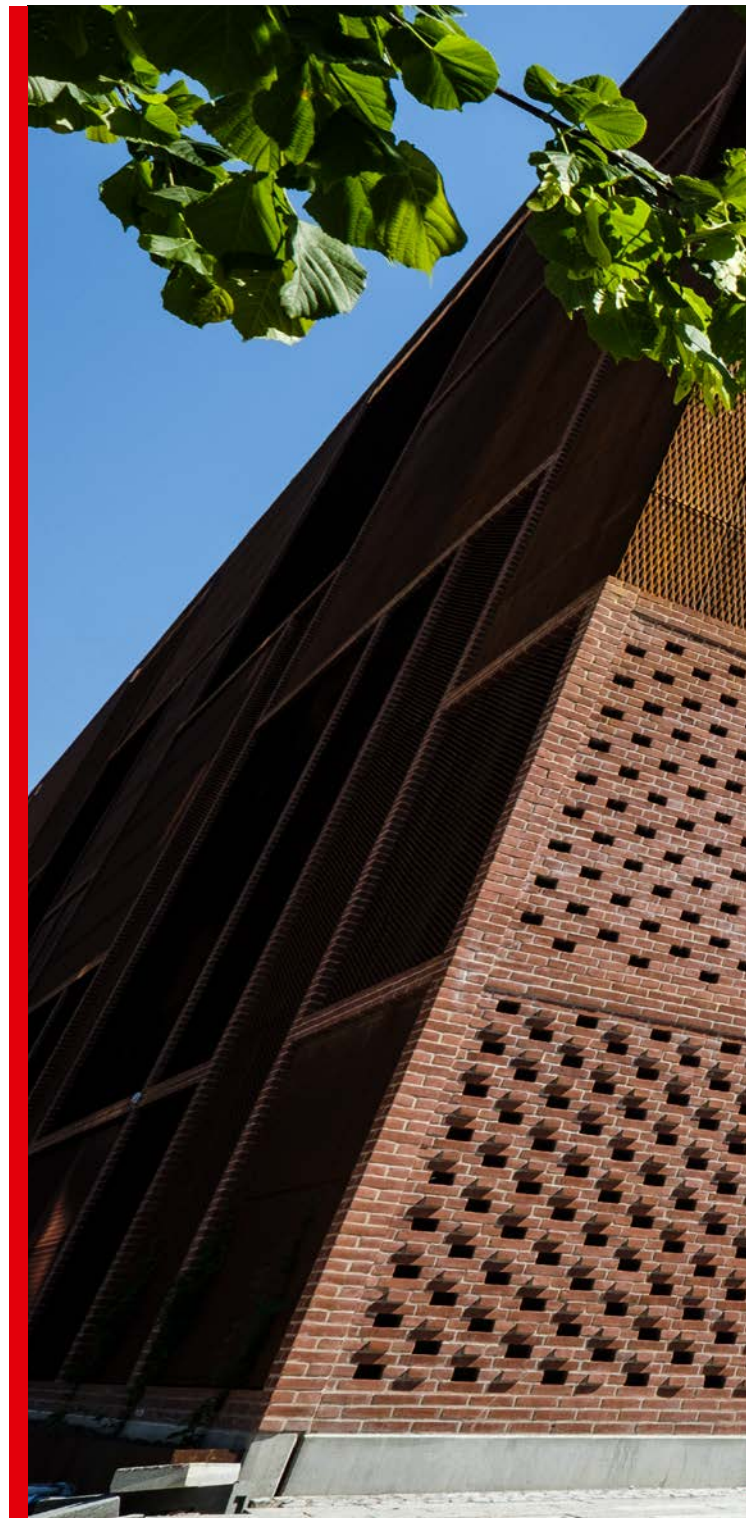
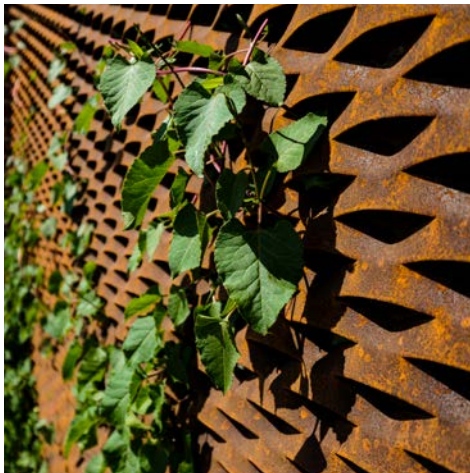
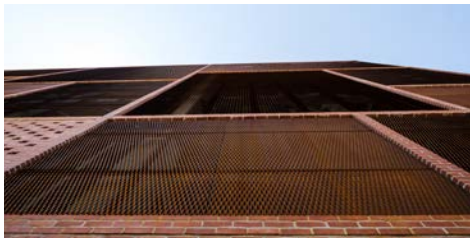
Corten steel expanded metal/ Clinker masonry facade

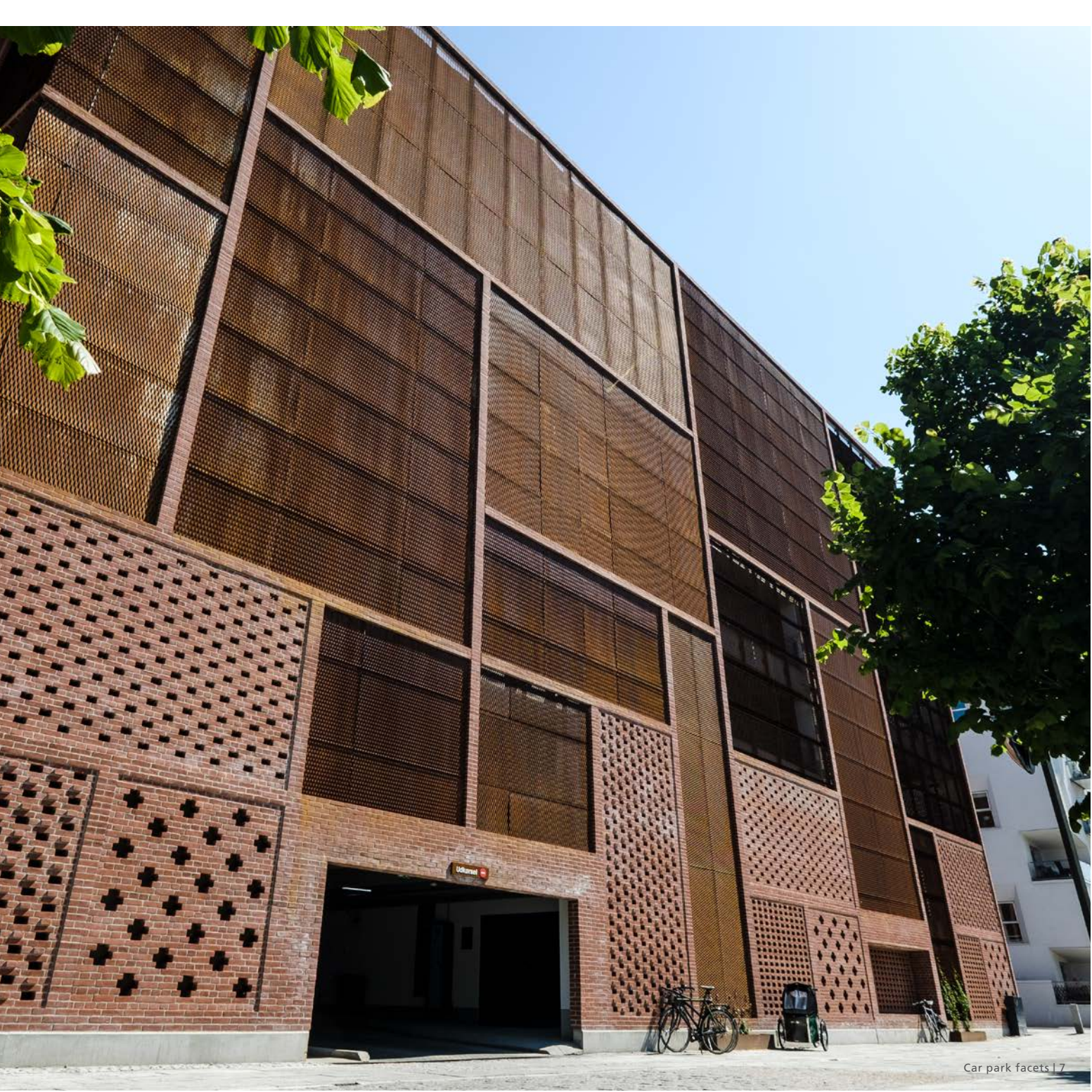
Construction project Ejler Bille car park in Copenhagen

Parking spaces 610

Construction system Prefabricated concrete

Construction time 12/16 to 01/18





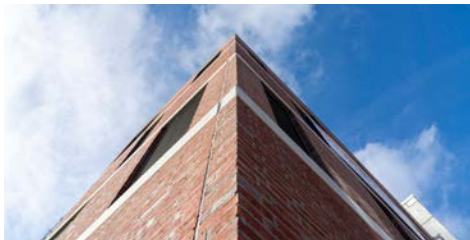
Clinker/stretch metal facade with stainless steel mesh

Construction project Hoebig car park in Rüsselsheim

Parking spaces 339

Construction system Steel composite

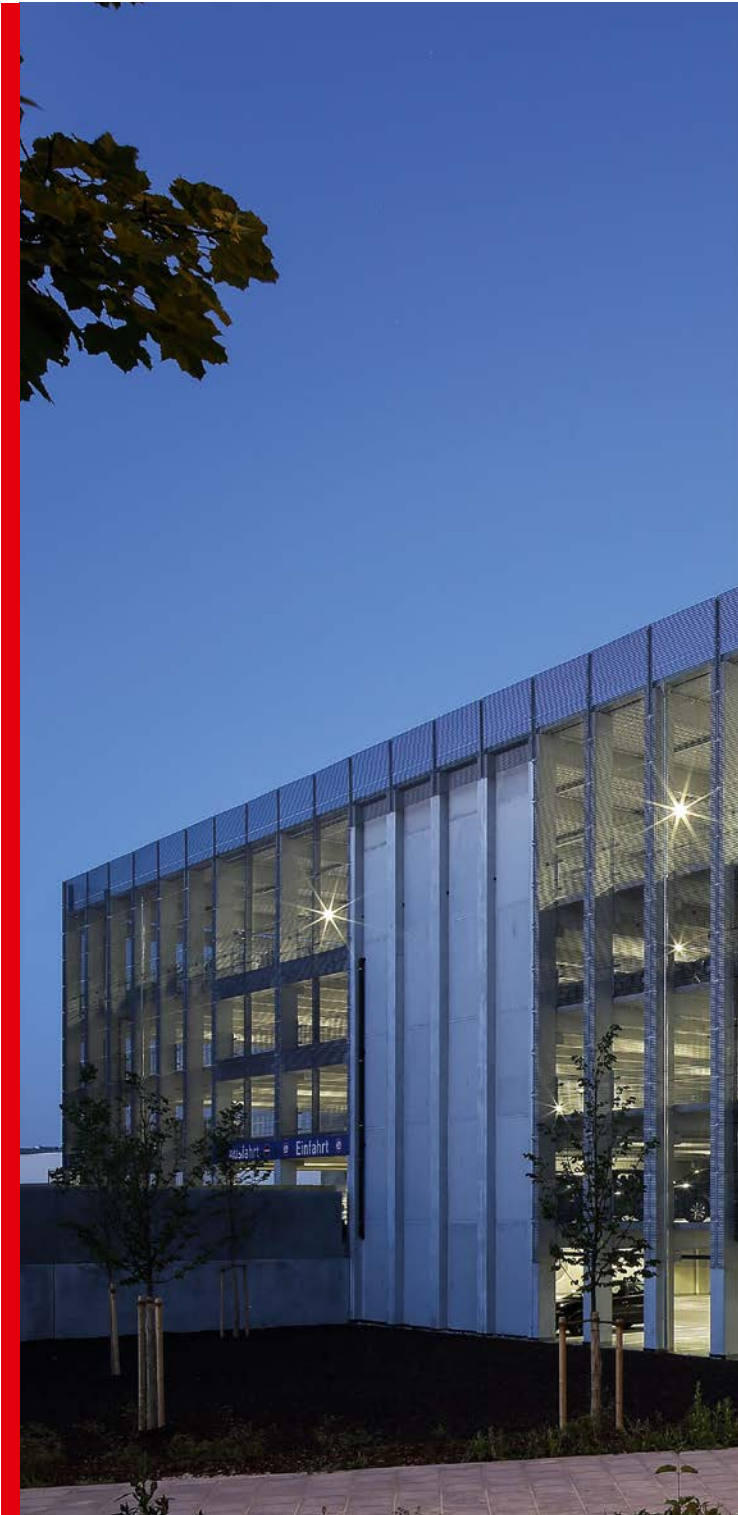
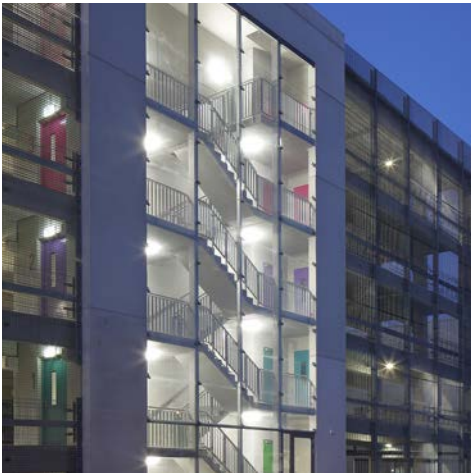
Construction time 08/20 to 03/21





Galvanised grating facade

Construction project	GVZ car park near Hall J in Ingolstadt
Parking spaces	418
Construction system	Prefabricated concrete
Construction time	08/14 to 12/14





Mesh mats facade

Construction project Kuka car park in Augsburg

Parking spaces 992

Construction system Steel composite

Construction time 05/17 to 06/18





Isopaneel facade greened and perforated

Construction project VW car park in Hanover

Parking spaces 736

Construction system Prefabricated concrete

Construction time 07/12 to 04/13





Isopaneel-/stretch metal facade

Construction project Liebherr-Aerospace car park
in Lindenberg

Parking spaces 1,635

Construction system Steel composite

Construction time 05/14 to 06/15





Isopaneel-/Lamella facade

Construction project car park on a logistic hall
in Mönchengladbach

Parking spaces 1,088

Construction system Steel composite

Construction time 06/18 to 05/19





Wood lamella facade

Construction project Krones car park in Neutraubling

Parking spaces 786

Construction system Steel composite

Construction time 03/15 to 10/15

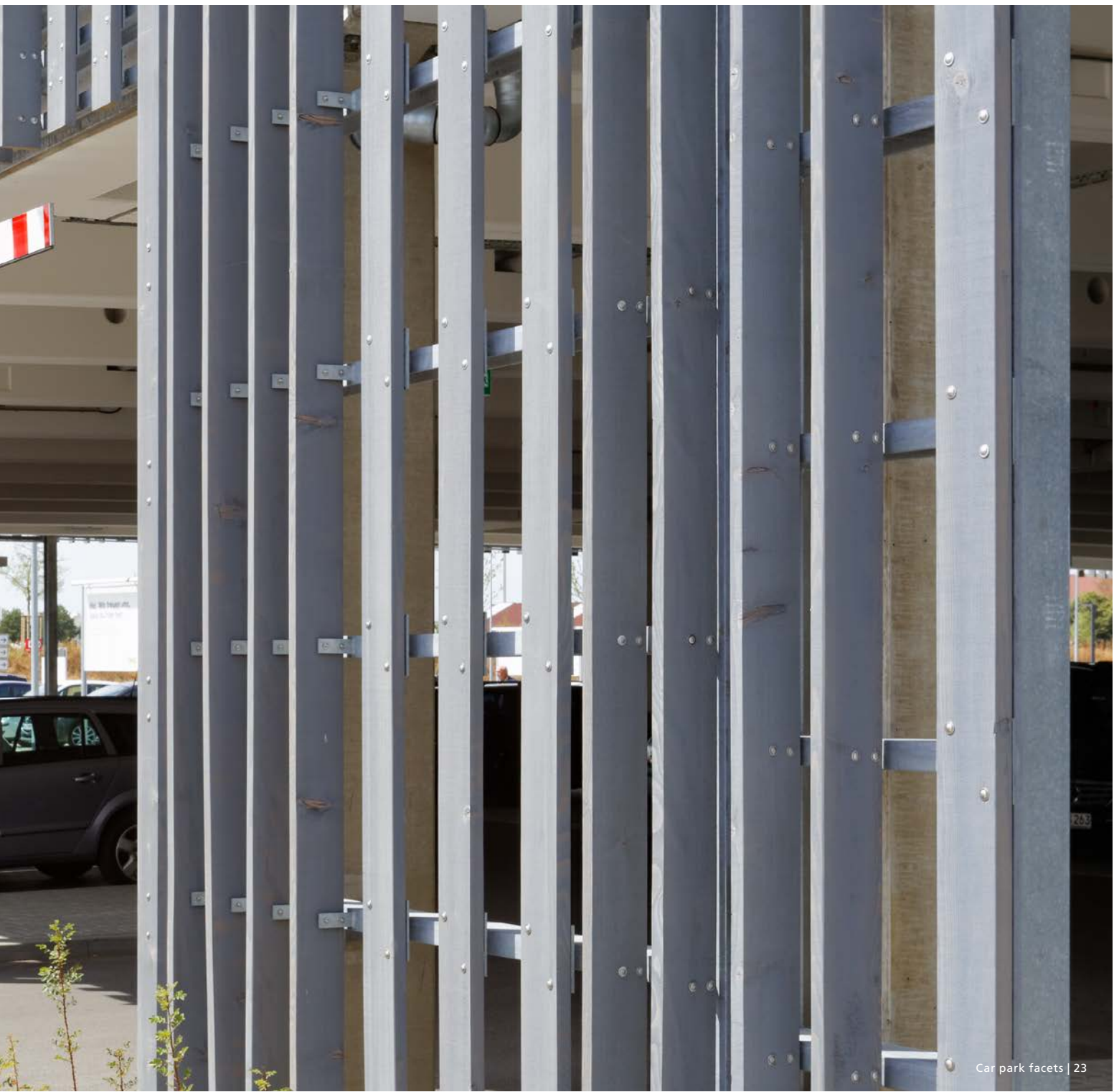




Wood lamella facade

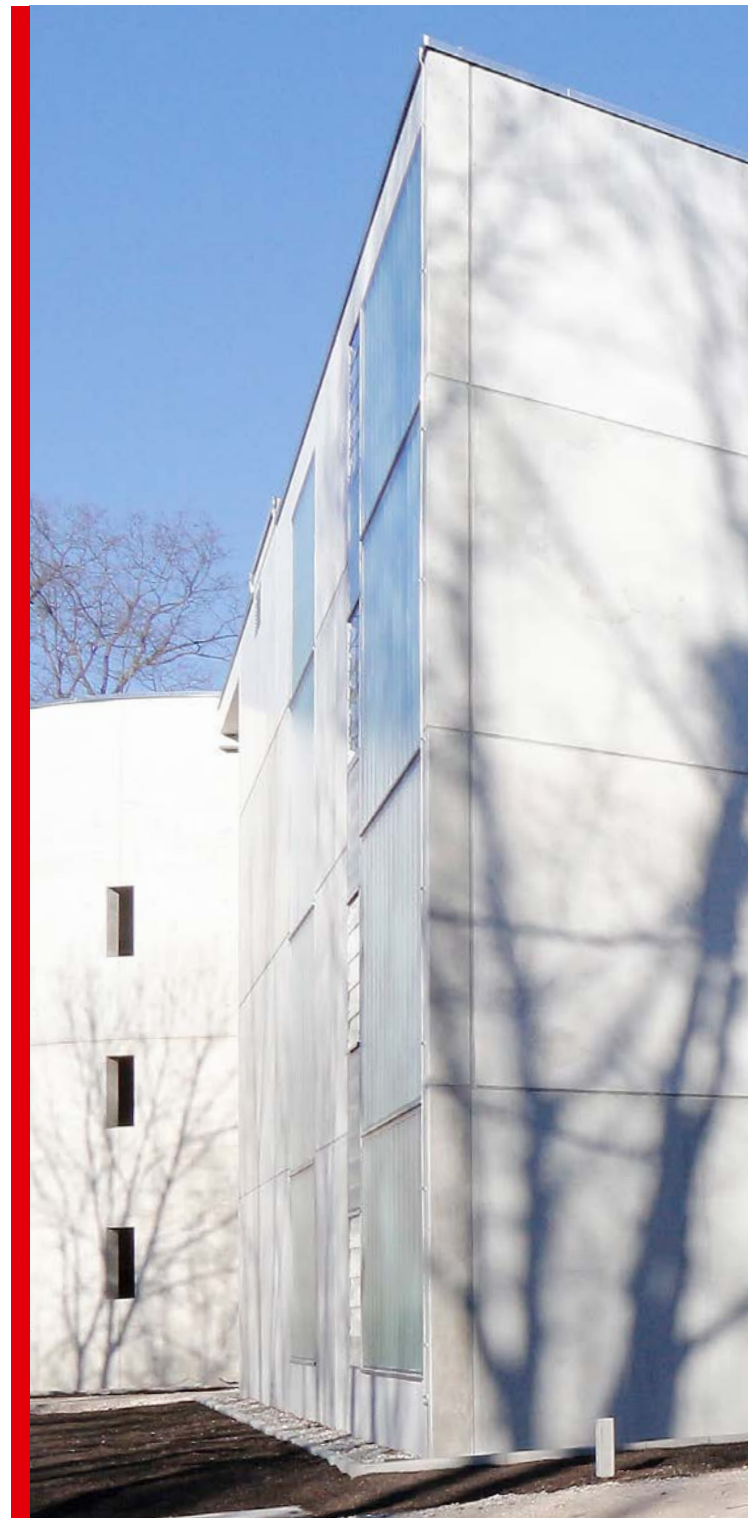
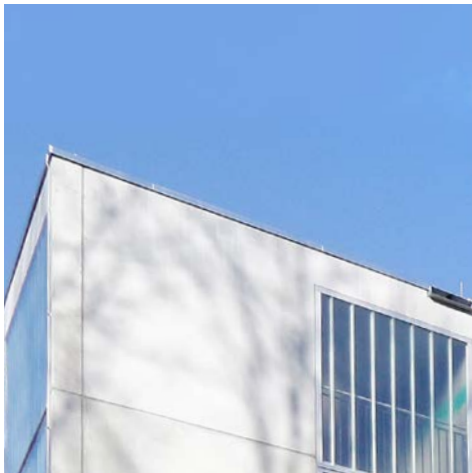
Construction project	Ikea car park in Kaarst
Parking spaces	510
Construction system	Prefabricated concrete
Construction time	08/16 to 10/17





Wood lamella facade

Construction project	Klinikum Nürnberg Süd car park in Nuremberg
Parking spaces	800
Construction system	Prefabricated concrete
Construction time	02/14 to 12/14





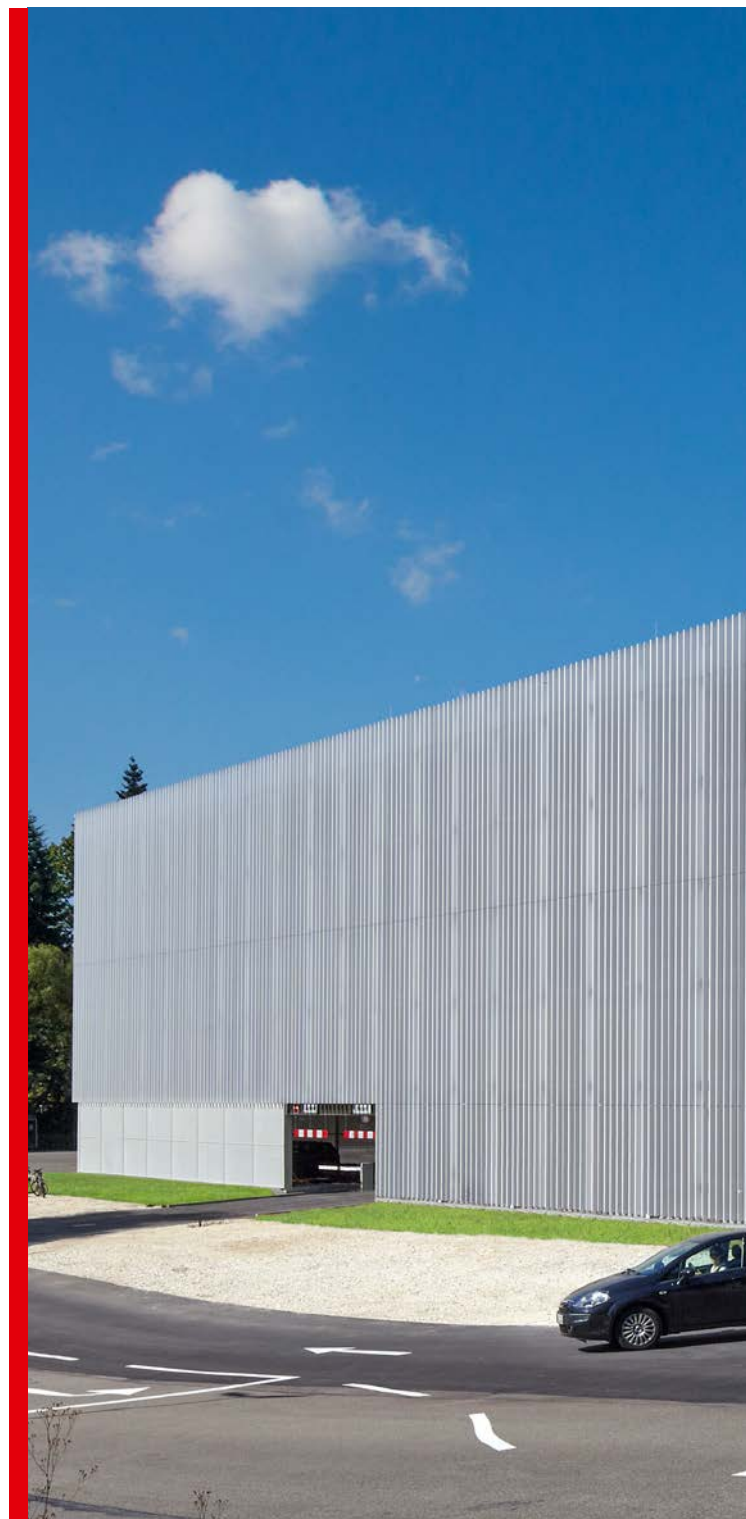
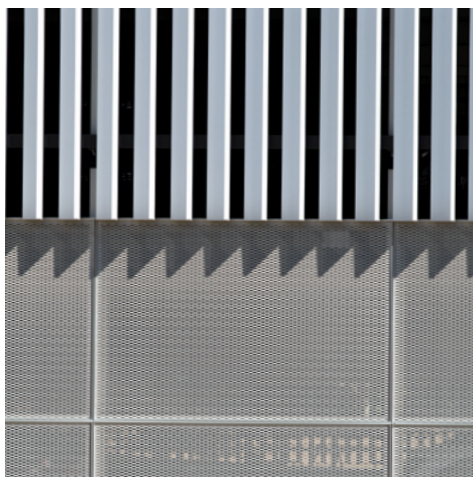
Aluminium lamellas-/ expanded metal facade

Construction project Bosch car park in Schwäbisch Gmünd

Parking spaces 800

Construction system Steel composite

Construction time 09/14 to 07/15





Aluminium lamella facade

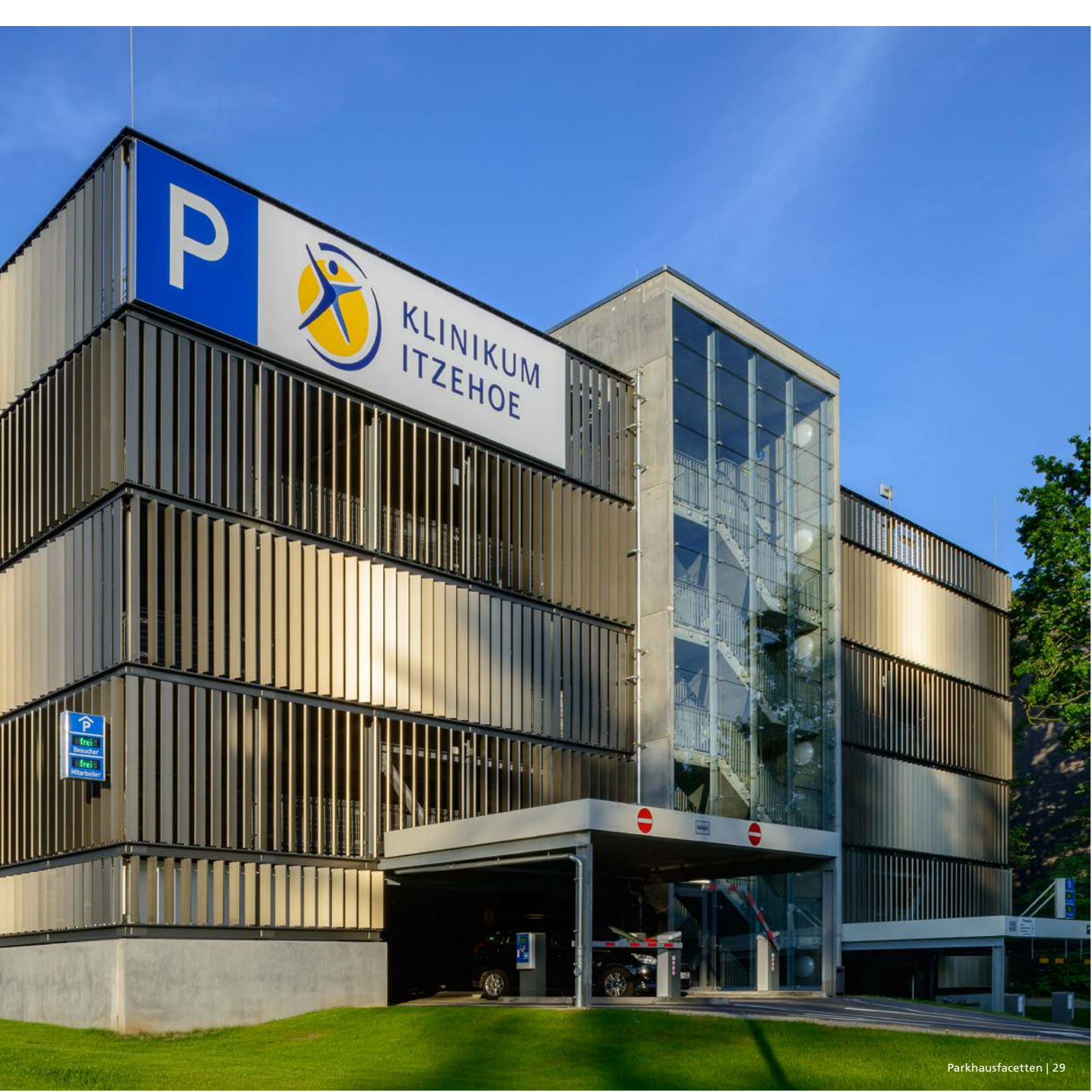
Construction project Klinikum Itzehoe car park
in Itzehoe

Parking spaces 687

Construction system Steel composite

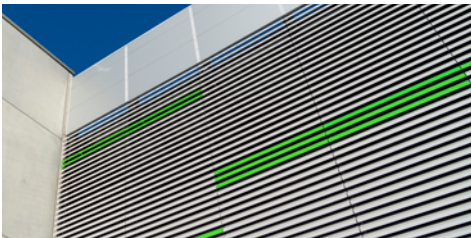
Construction time 01/18 to 04/19





Aluminium lamella/ isopaneel facade

Construction project	Goodman van car park in Straubing
Parking spaces	450 van + 18 cars
Construction system	Steel composite
Construction time	12/20 to 10/21





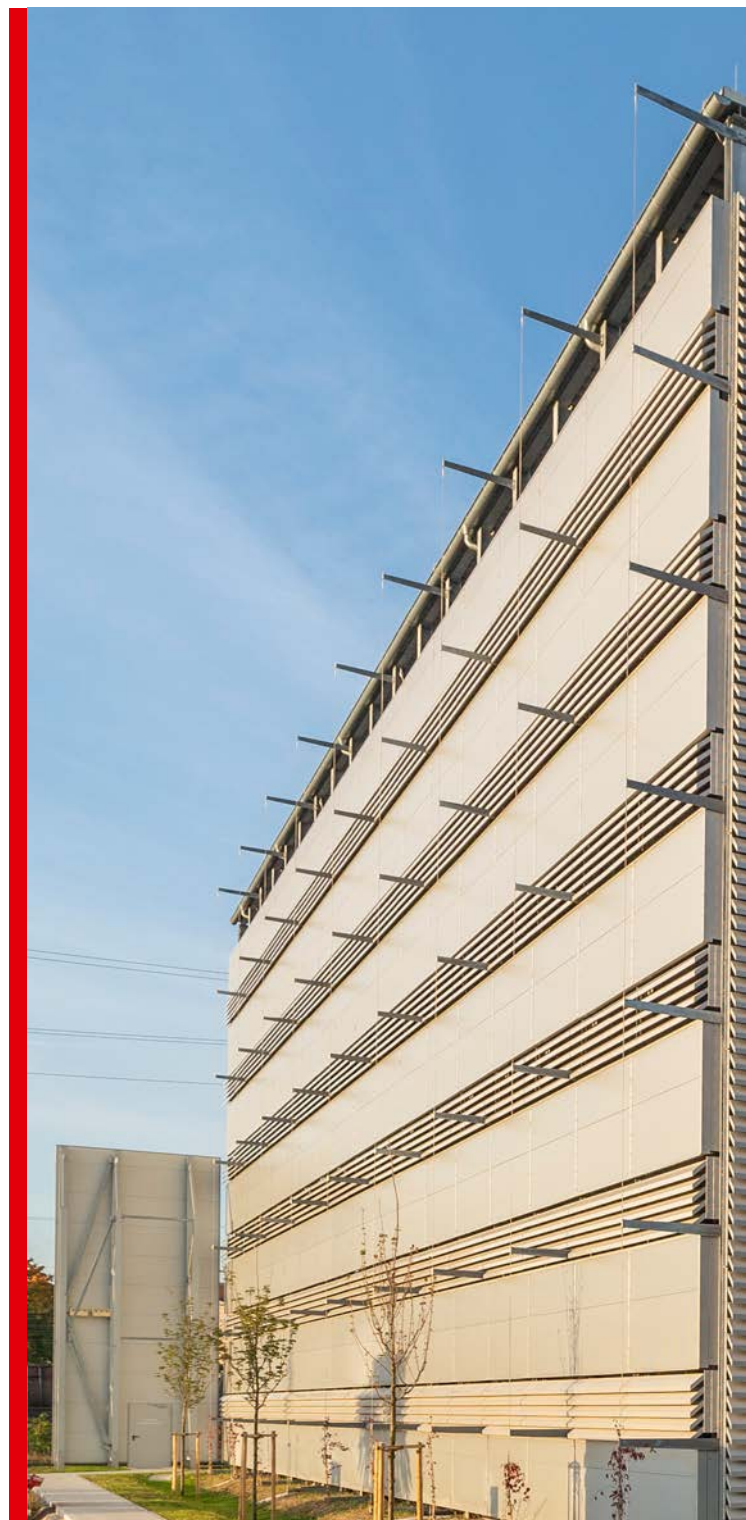
Aluminium lamella/ isopaneel facade with climbing rops for plants

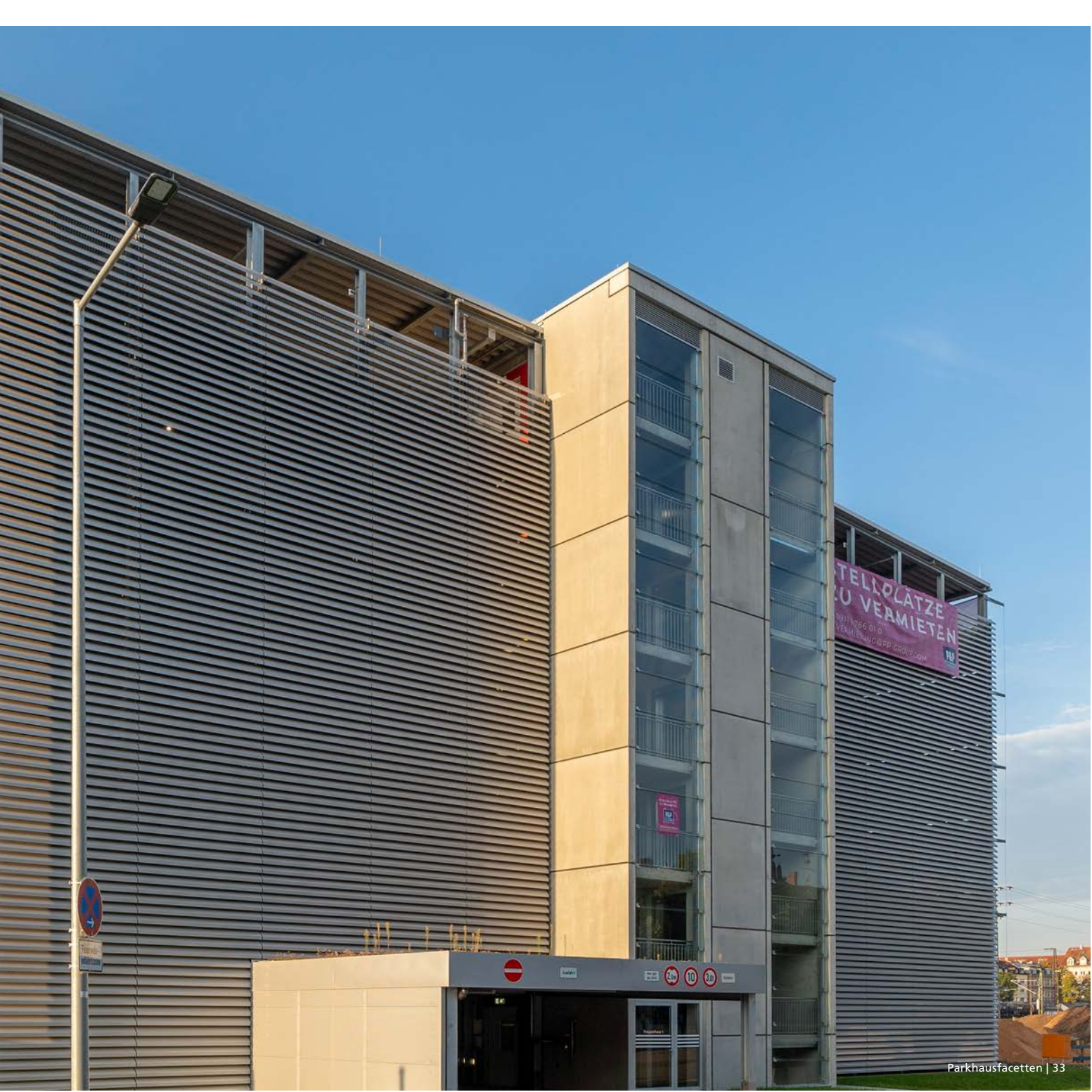
Construction project Hornschuch car park in Fürth

Parking spaces 390

Construction system Steel composite

Construction time 04/20 to 12/20





Aluminium lamella facade with pv system

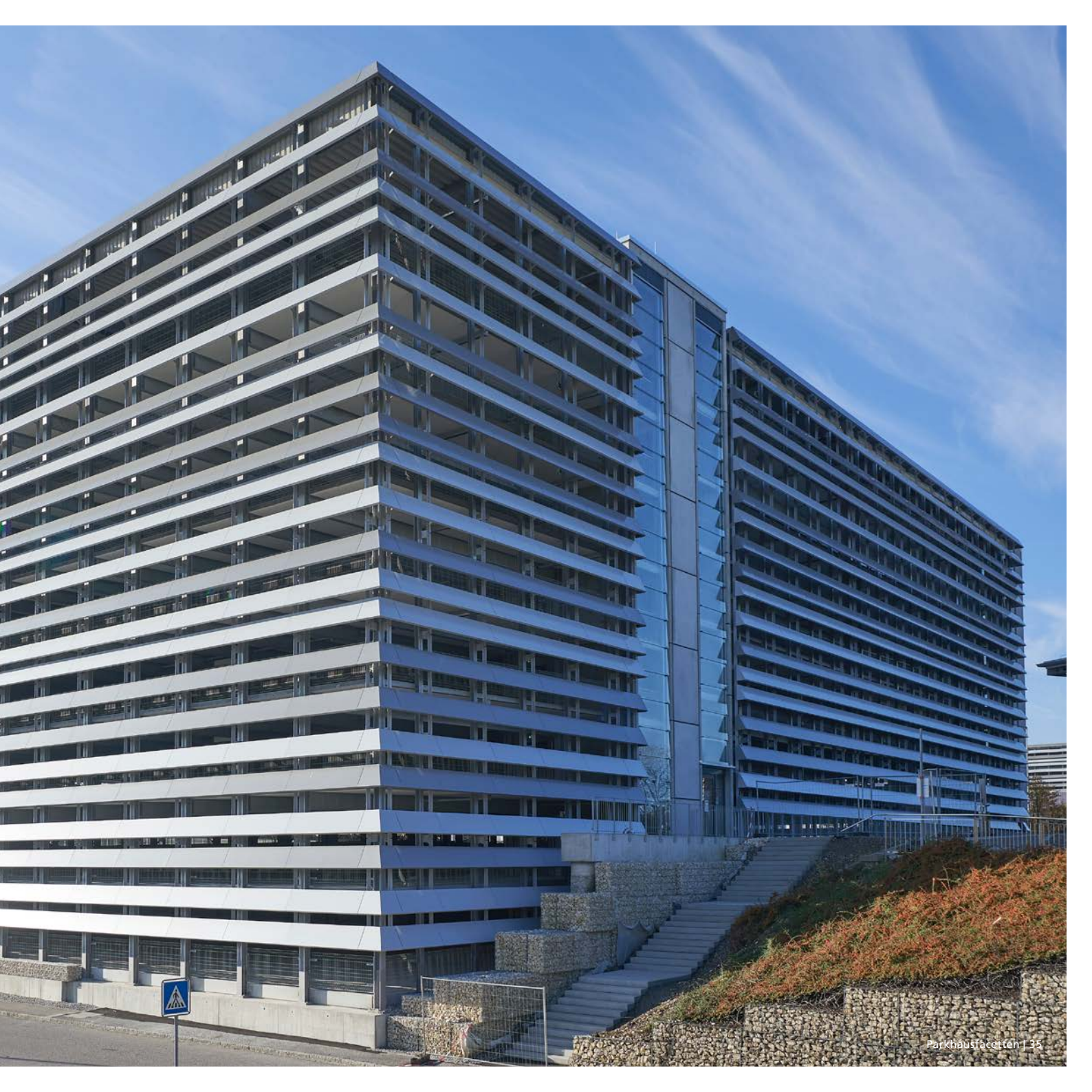
Construction project Hilti I und II car parks in Kaufering

Parking spaces 918 + 926

Construction system Steel composite

Construction time 06/15 to 12/15 and 08/18 to 04/20





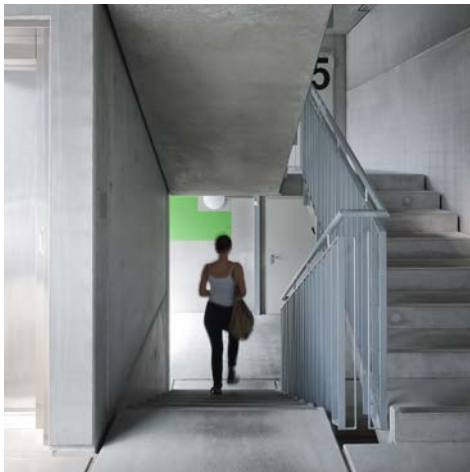
Aluminium pilaster strip facade

Construction project St. Marien children's hospital car park in Landshut

Parking spaces 238

Construction system Steel composite

Construction time 10/16 to 10/17





Aluminium pilaster strip/ isopaneel facade

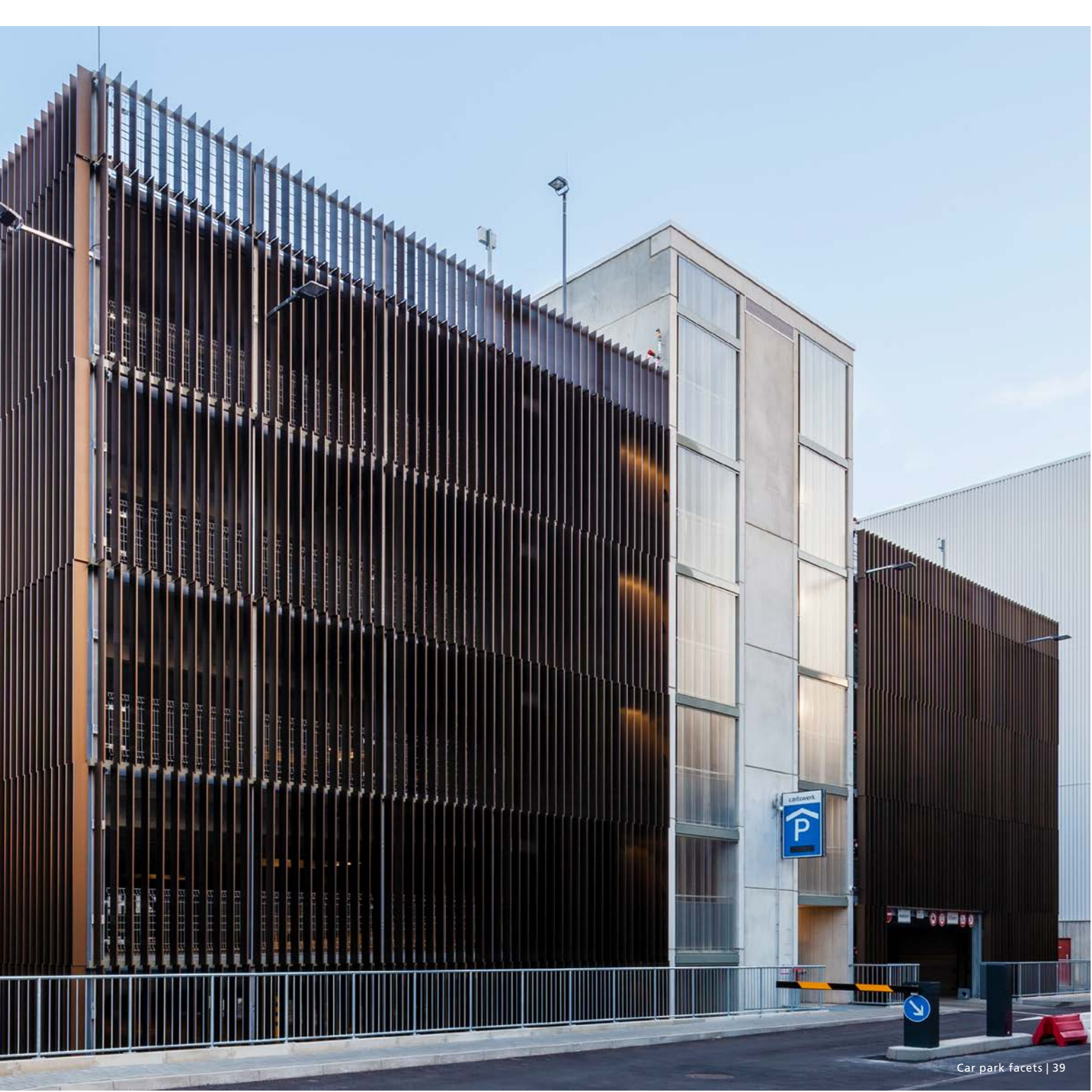
Construction project Carlswerk car park in Cologne

Parking spaces 448

Construction system Steel composite

Construction time 06/17 to 06/18





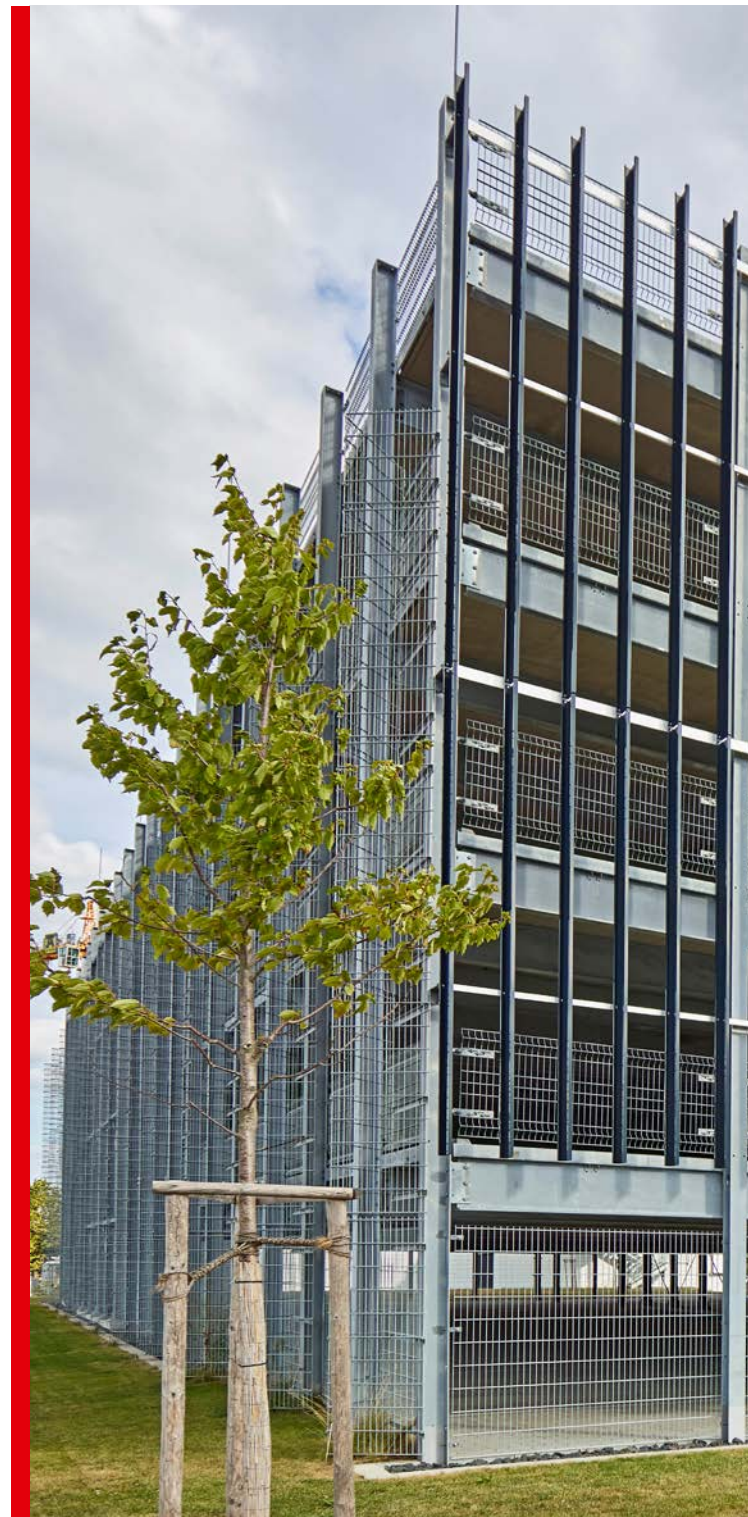
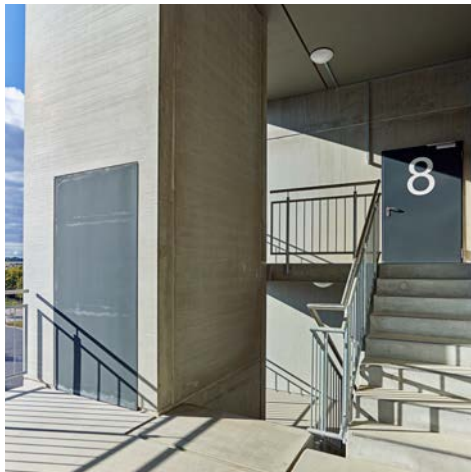
Aluminium pilaster strip/ double rod mats/trellis facade

Construction project Intersport car park in Heilbronn

Parking spaces 600

Construction system Steel composite

Construction time 02/16 to 09/16





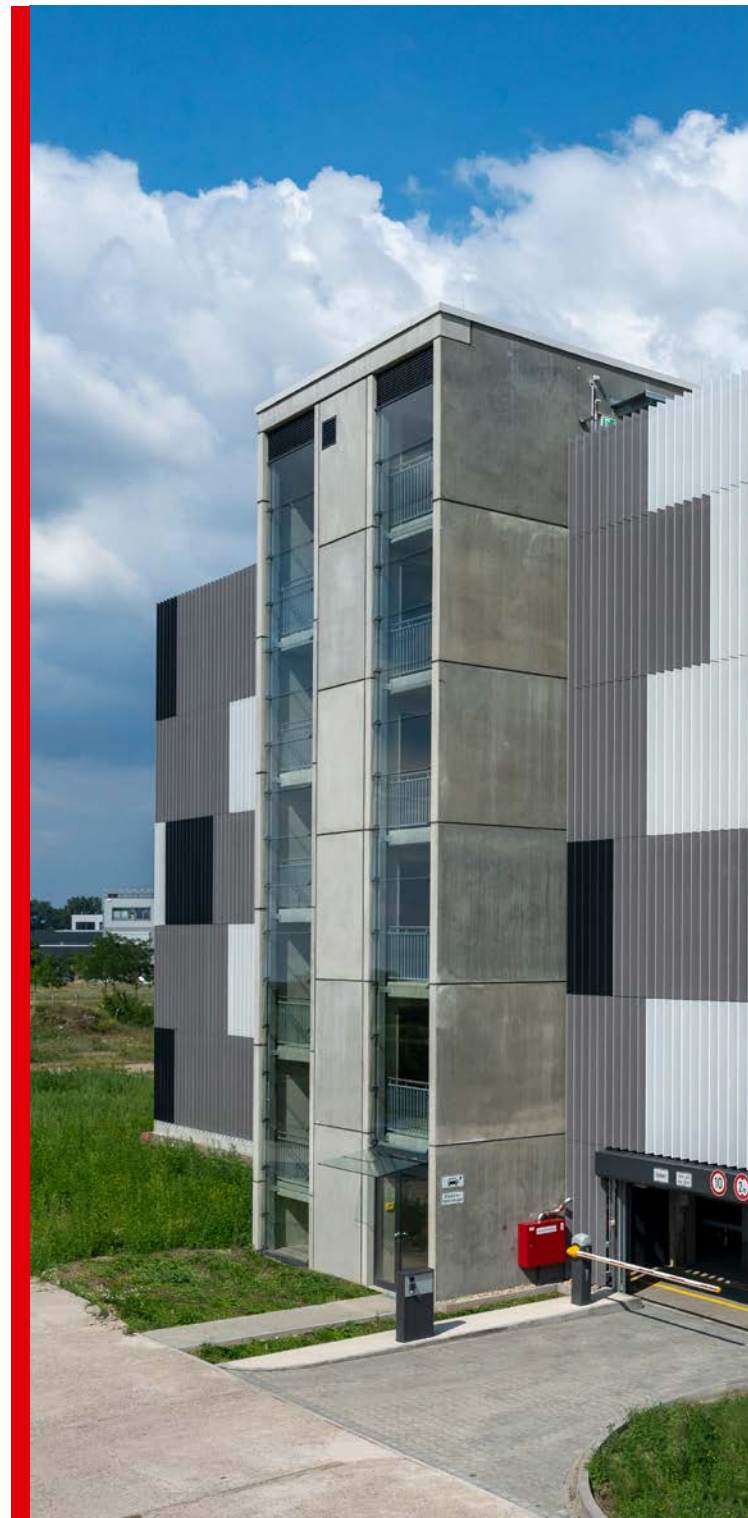
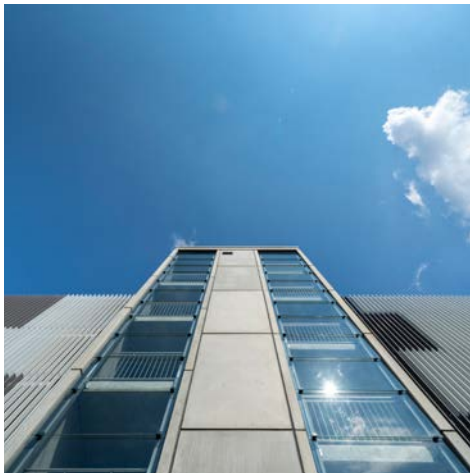
Aluminium pilaster strip/ expanded metal facade

Construction project Am Oktogon car park in Berlin

Parking spaces 353

Construction system Steel composite

Construction time 02/20 to 12/20





Safety Catcher/Impact Protection

Construction project	Hessencenter car park in Frankfurt
Parking spaces	1,380
Construction system	Prefabricated concrete
Construction time	04/19 to 10/20

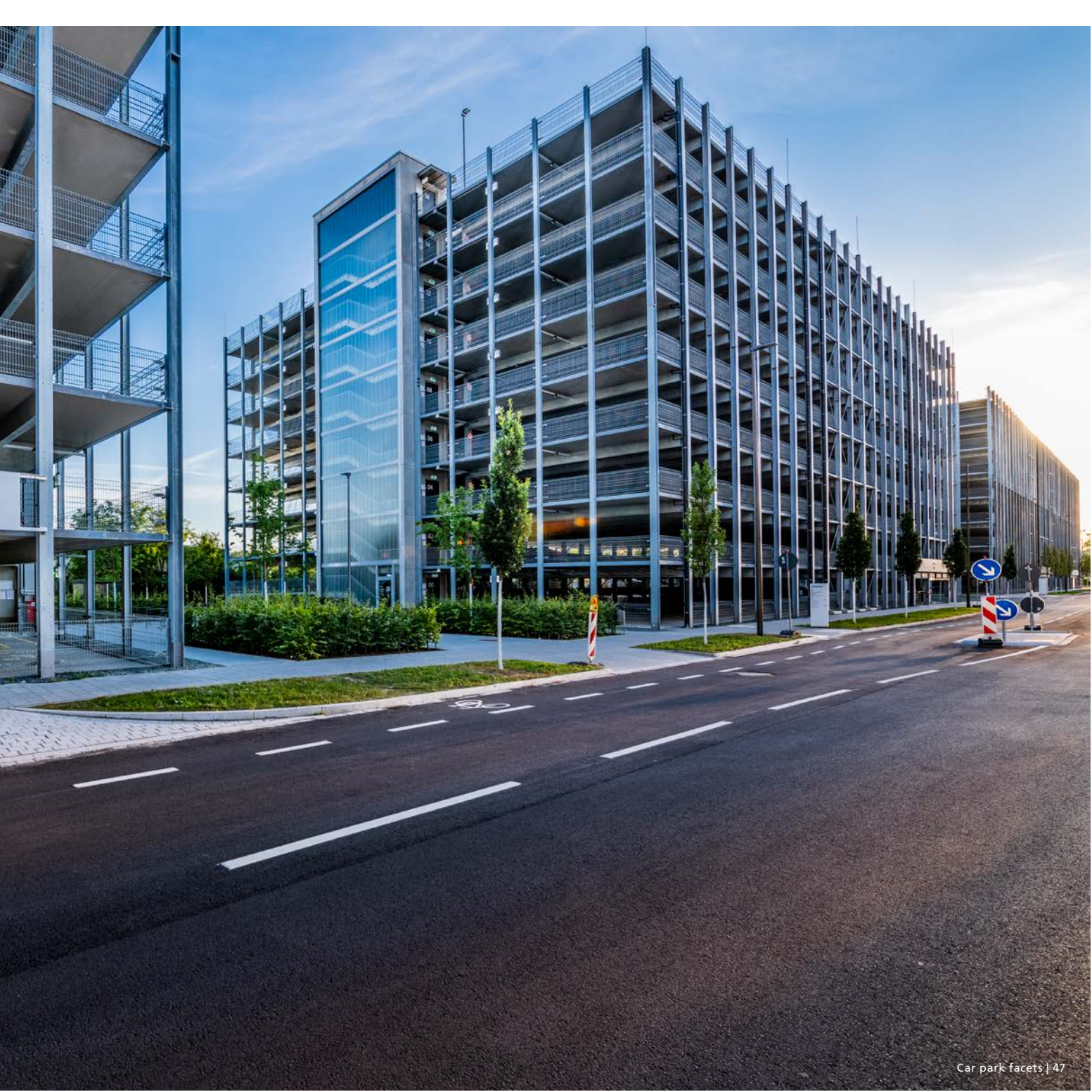




Safety Catcher/Impact Protection

Construction project	Siemens Campus car parks in Erlangen
Parking spaces	1,258 + 616 + 791
Construction system	Steel composite
Construction time	01/17 to 06/19





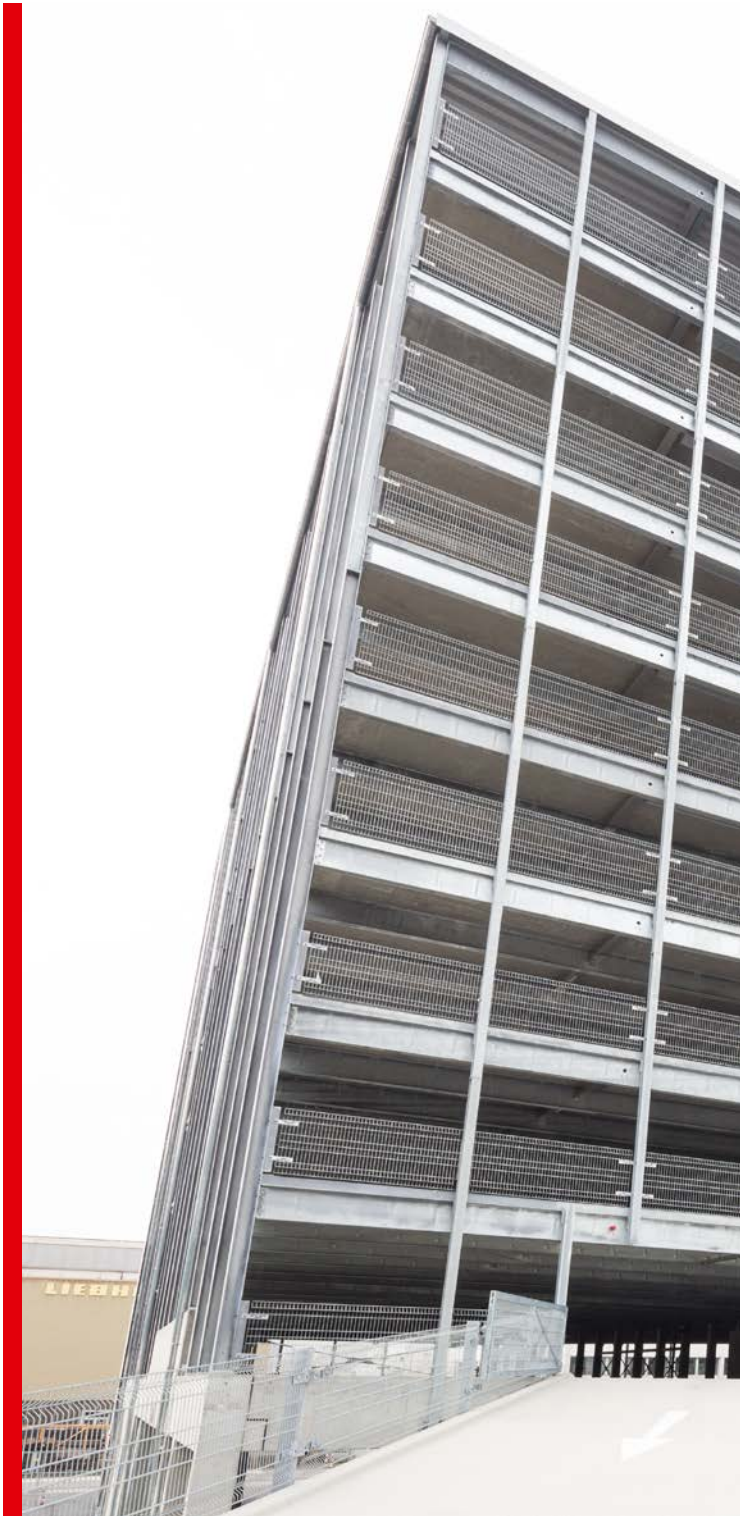
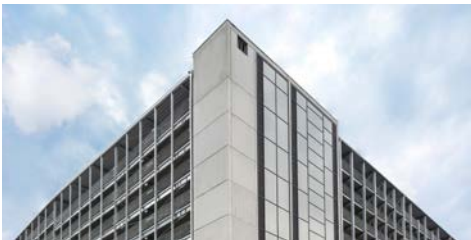
Safety Catcher/Impact Protection

Construction project Liebherr car park in Biberach

Parking spaces 943 (+ 16 for trucks)

Construction system Steel composite

Construction time 08/13 to 07/14

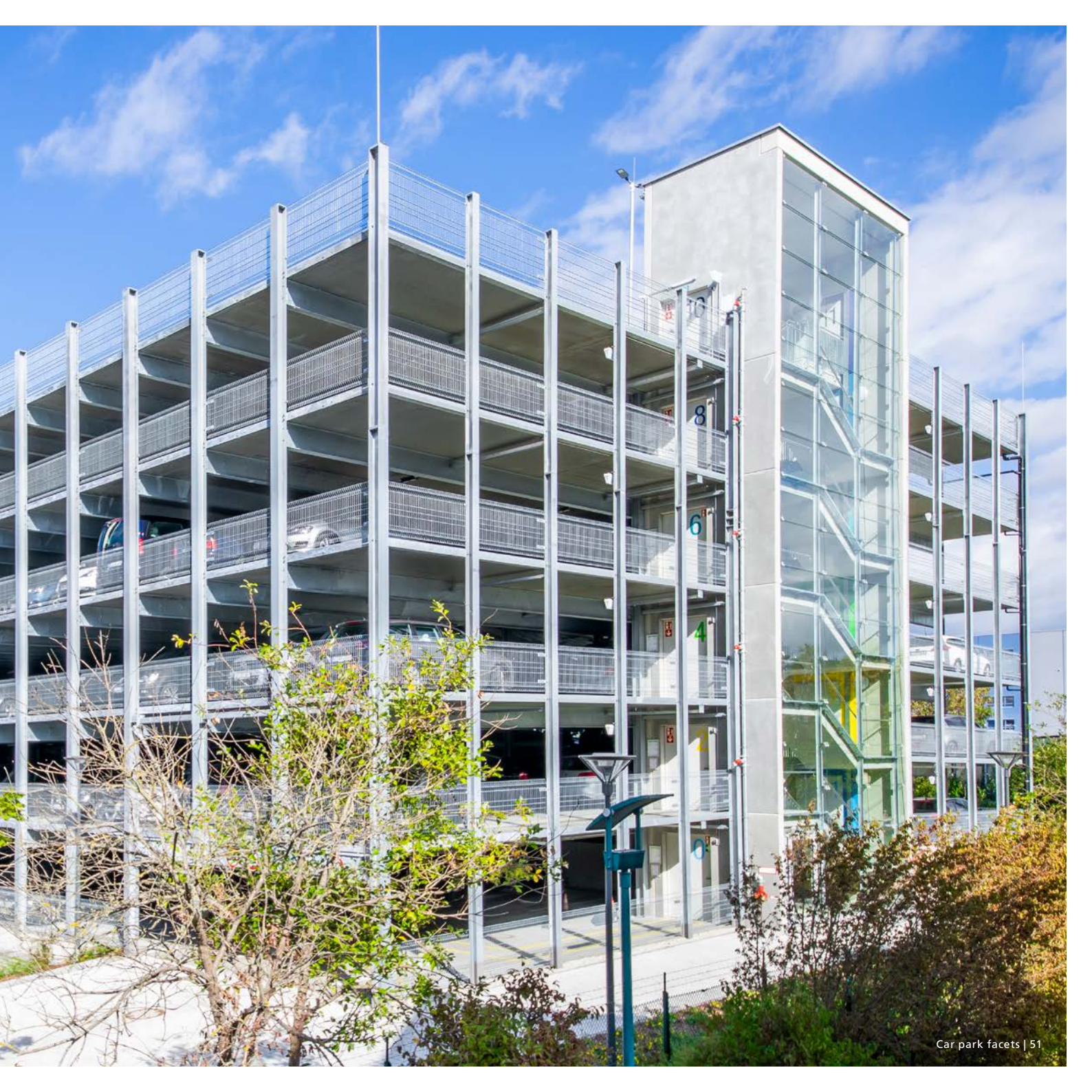




Safety Catcher/Impact Protection

Construction project	Tennet car park in Bayreuth
Parking spaces	478
Construction system	Steel composite
Construction time	05/17 to 06/18





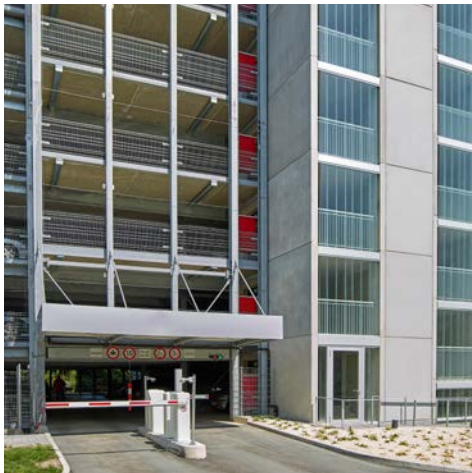
Safety Catcher/Impact Protection

Construction project Car park Office One in Stuttgart

Parking spaces 318

Construction system Steel composite

Construction time 06/17 to 02/18





TRELLEBORG
Gestalte deine Zukunft
bei Trelleborg
www.trelleborg.com/en/career

Safety Catcher/Impact Protection

Construction project Porsche Bau 11 car park in Stuttgart

Parking spaces 1,060

Construction system Steel composite

Construction time 09/16 to 08/17





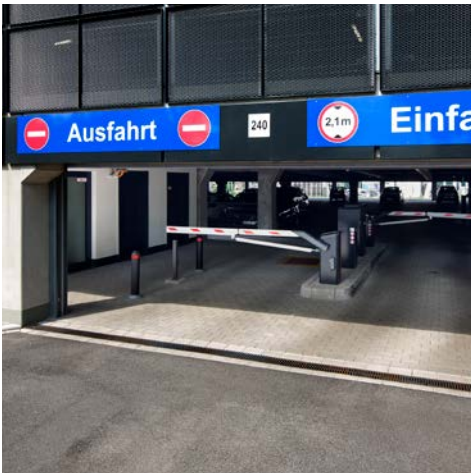
Expanded metal facade

Construction project W56 car park in Leverkusen

Parking spaces 412

Construction system Prefabricated concrete

Construction time 05/15 to 06/16







Max Bögl Group

With over 6,500 highly qualified employees at 40 locations worldwide and an annual turnover of over 2 billion euros, Max Bögl is one of the largest construction companies in the German construction industry. Since its foundation in 1929, the company's history has been characterised by innovative strength in research and technology – from tailor-made individual solutions to constructionally and ecologically sustainable overall solutions.

With forward-looking in-house developments on topics of our time, such as renewable energies, urbanisation, mobility and infrastructure, the Max Bögl Group is already realising solutions for the megatrends of our globalised world. Based on many years of experience and competence in high-prec-

sion precast concrete construction, Max Bögl is also positioning itself as an important driving force in the development of innovative products, technologies and construction processes.

The wide range of services and the high level of vertical integration with our own steel construction, our own precast plants, the most modern fleet of vehicles and equipment as well as our own raw materials and building materials guarantee the highest quality. The use of BIM, lean management/production and standardised project processing ensures adherence to schedules and cost-effectiveness from the initial concept idea to the finished building product.

die-jaeger.de 02/22; Photo credits: Boris BormBoris Borm (p. 45); Sebastian Engels p. 28/29); Reinhard Mederer (title, p. 2, 8/9, 20/21, 30/31, 32/33, 34/35, 42/43, 46, 50/51); Sebastian Hopp (p. 4/5, 38/39); Firmengruppe Max Bögl (p. 5, 44, 47); Morten Øbro (p. 6/7); Norman Radon (p. 10/11, 36/37); Kleeblatt-Film e.K. (p. 12/13); MM Video Fotowerbung (p. 14/15); Jürgen Wiskow (p. 16/17, 48/49); Tom Reindel (p. 18/19, 22/23); Tom Kimpfel Fotodesign (p. 24/25); Jochen Stüber (p. 26/27); TomPhilippi-Stuttgart (p. 40/41, 52/53, 54/55); www.schwalenberg-fotografie.com (p. 56/57); Nürnberg Luftbild, Hajo Dietz p. 58)

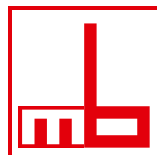


Max Bögl Group
Max-Bögl-Strasse 1
D-92369 Sengenthal
Germany

Postal address:
P. O. Box 1120
D-92301 Neumarkt i. d. OPf.
Germany

P +49 9181 909-0

parkhaus@max-boegl.de
max-boegl.de



MAX BÖGL

Progress is built on ideas.